



ELEVATION "A"



ELEVATION "B" (Model)



ELEVATION "C"



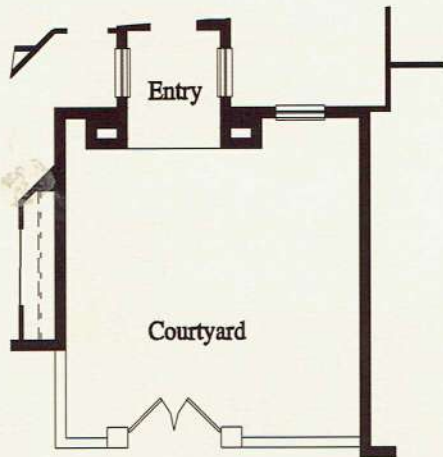
ELEVATION "D"



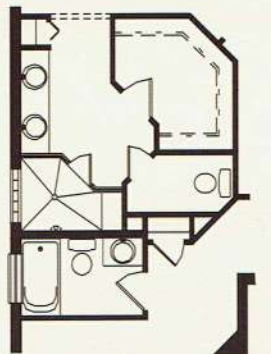
ELEVATION "E"



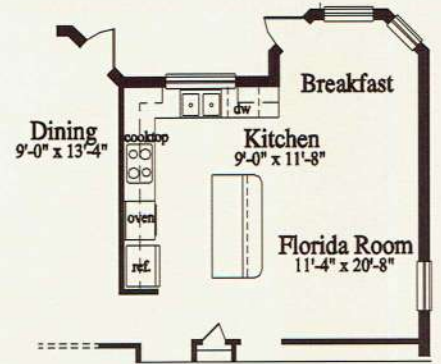
ELEVATION "F"



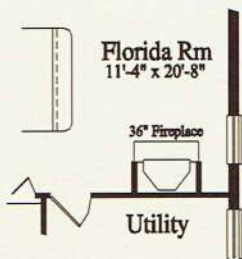
Optional Courtyard



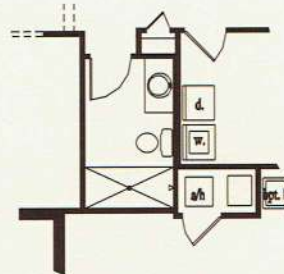
Optional Glass Block @ Master Bathroom



Optional Gourmet Kitchen



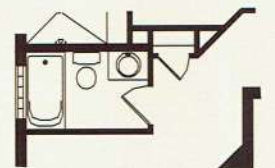
Optional Fireplace @ Florida Room



Optional Shower @ Powder Bath



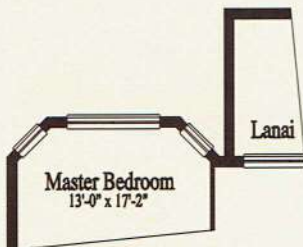
Optional Laundry In Garage



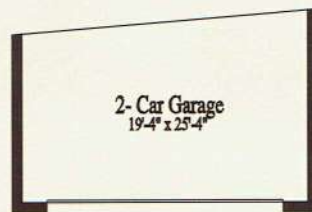
Optional Glass Block @ Bathroom #2



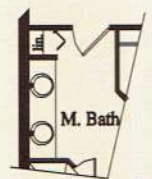
Opt. Tray Ceiling @ Master Bedroom



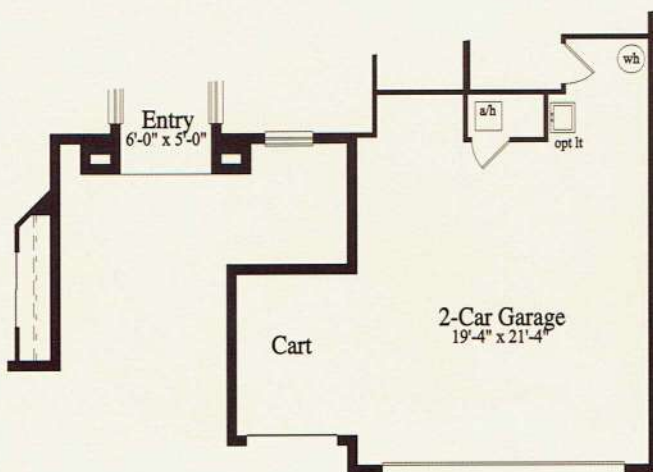
Optional Bay @ Master Bedroom



Optional 4ft Garage Extension



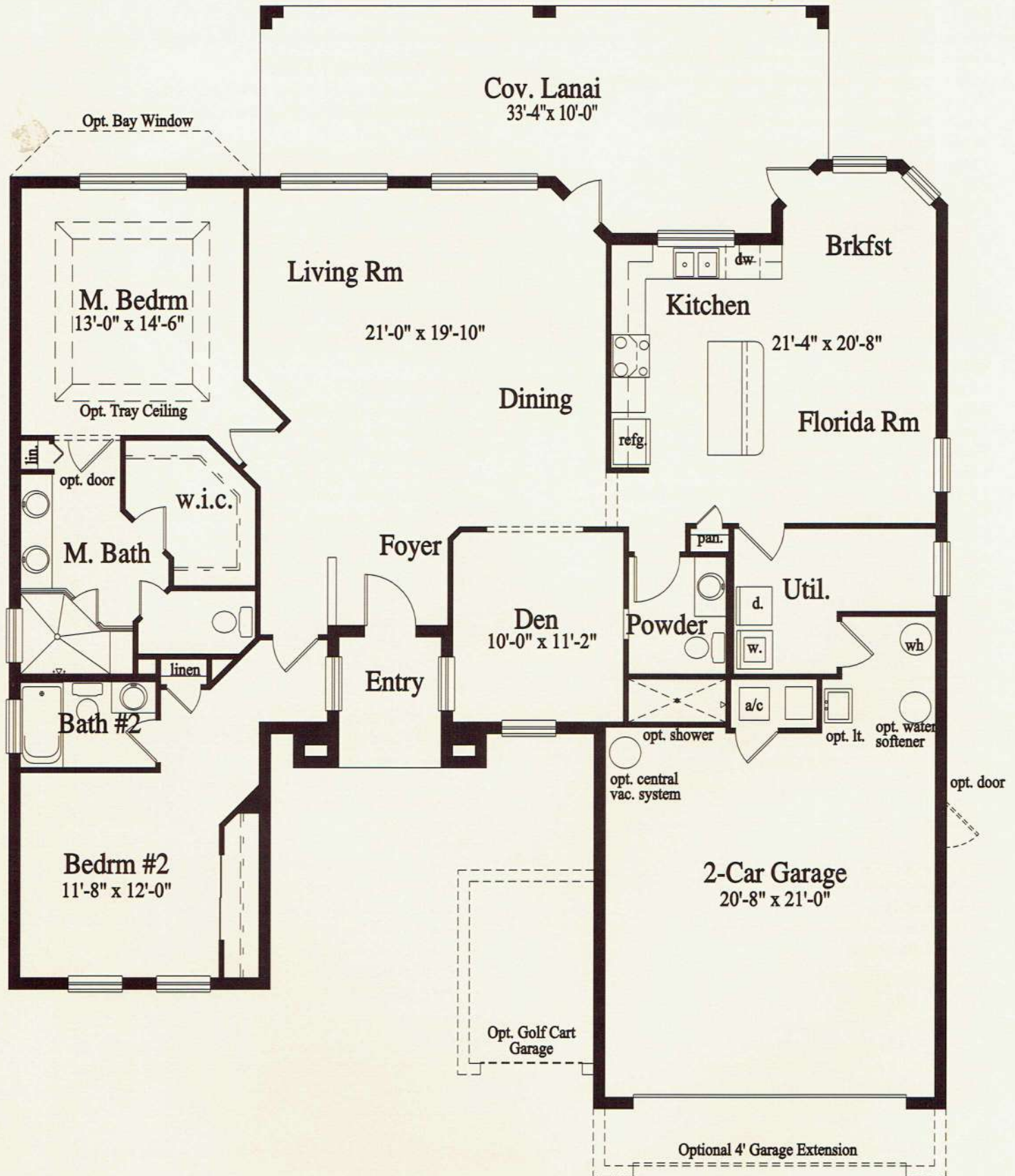
Opt. door @ master bath



Optional Golf Cart Garage

Living Area..... 1,876 square feet
 Covered Entry..... 57 square feet
 Covered Lanai 370 square feet
 Garage 538 square feet

Total..... 2,841 square feet



1,876 Square Feet of Living Area

- 2 Bedrooms
- 2 1/2 Baths
- Den
- 2 Car Garage

DISTINCTIVE FEATURES

DISTINCTIVE EXTERIOR FEATURES:

- Exciting Tuscan exterior elevations (optional tile roof available)
- 30 year dimensional asphalt shingle roof (10 year fungus resistant guarantee)
- Choice of decorator selected exterior color packages
- Kwikset antique nickel lever door handle and deadbolt lock set
- Brick paver driveway, front porch and matching entry walk in Mediterranean pattern
- Covered rear lanai with masonry ceiling finish
- Covered front entry with masonry ceiling finish (per elevation)
- 8' sliding glass doors
- Electric garage door opener with two remotes
- Two-car garage
- 6" gutters and splash guard (front & rear per plan)
- Door chime with lighted push button
- 42" brick paver entry walk
- 8' six-panel textured fiberglass front door
- (2) weatherproof outlets in predetermined locations
- (2) hose bibs in predetermined locations
- Decorative coach lights at garage and front entry (per elevation)

QUALITY CONSTRUCTION:

- Engineered to meet Environments For Living – Silver Package
- Concrete block construction
- Textured masonry coating with 100% acrylic finish
- Bronze framed aluminum windows with easy care tilt-out feature
- Monolithic concrete slabs with vapor barrier
- Lennox heat pump heating and cooling system with 12 SEER rating
- One year termite protection
- R-30 fiberglass insulation in ceiling above air conditioned space
- R-11 fiberglass wall insulation between garage and living area
- 50 gallon water heater
- Screens for all operable windows and sliding glass doors

PREFERRED INTERIOR FEATURES:

- Elegant 10' ceilings throughout
- Upgraded 12" x 12" ceramic tile flooring at foyer, kitchen, breakfast room, all baths and laundry room (per plan)
- Saxony carpet and 6 lb. pad
- Latex gloss enamel paint on baseboards and door casings
- Latex satin finish interior wall paint in white
- 8' six-panel Colonist interior doors
- Oversized 5 1/4" baseboards
- Decorative drywall niche (per plan)
- Rounded drywall corners (per plan)
- Knockdown texture on ceiling
- Orange peel texture finishes on walls
- Solid surface windowsills (straight cut)
- Large walk-in closet at master bedroom (per plan)
- Vinyl-clad closet shelving

ELECTRICAL FEATURES:

- 200 AMP electrical service
- Washer & dryer hook-ups (per plan)
- Pre-wired for (3) telephone outlets in predetermined locations
- Pre-wired for (3) television outlets in predetermined locations
- Pre-wired for ceiling fans at Florida room (or great room) and all bedrooms

- Structured wiring panel in predetermined location
- White Decora rocker switches throughout
- Smoke detectors
- Carbon monoxide detectors in conjunction with Environments For Living

CONTEMPORARY KITCHEN FEATURES:

- Kohler double compartment cast iron sink in a choice of two colors
- Corian solid surface countertops with decorative edge and 4" backsplash with a choice of two colors
- Moen chrome single lever faucet with spray
- Choice of oak or maple flat panel cabinets in choice of finishes
- 36" upper cabinets with fully concealed hinges
- Insinkerator 1/3 H.P. garbage disposal
- Recessed lighting at predetermined locations

QUALITY WHIRLPOOL APPLIANCES FEATURING:

- 21.6 cu. ft. side-by-side refrigerator with ice and water in door
- Ceramic top range with self-cleaning oven
- Built-in microwave with outside vent
- Multi-cycle dishwasher

CLASSIC BATHROOMS:

- 42" plate glass mirrors (per plan)
- 6" x 6" white or bone ceramic wall tile in all baths
- 3" x 3" white or bone shower floor tile at master bath (per plan)
- Kohler Roman-style tub (per plan)
- Pedestal sink at powder room (per plan)
- Corian solid surface vanity tops with double drop-in bowls (per plan)
- Moen chrome/polished brass faucets with 8" spread at master bath and secondary bath
- Safety grab bars at master shower
- Clear or obscure glass shower enclosure in chrome (master bath only)
- Decorative lights over vanities
- Exhaust fans in all baths
- Kohler/Sterling plumbing fixtures throughout with Moen faucets
- Comfort height vanities in all baths
- Glass block windows (per plan)

EXCITING OPTIONS:


- Upgraded Environments For Living – Gold package
- Structural options available (per plan)
- Comfort energy package which includes radiant barrier and/or tailored foam
- Entertainment center & additional built-ins
- Upgraded appliances
- Washers and dryers
- State-of-the-art audio, video and intercom systems
- Security and central vacuum systems
- Designer lighting packages
- Flooring and countertop materials
- Upgraded cabinetry and cabinet options
- Upgraded landscaping packages
- Upgraded shower enclosures

LANDSCAPE:

- These single-family homes include a professional landscape plan. Sod in front, side, and rear with irrigation. Lawn care maintenance of all neighborhoods is included in the monthly fees.

ENVIRONMENTS FOR *Living*

395 Village Drive • Poinciana, Florida 34759 • (863) 427-7000 • (800) 592-6099 • www.solivita.com

 Occupancy restricted to at least one person 55 years of age or older, a limited number of residents may be younger and no one may permanently reside in the home under 18 years of age. Membership and additional fees for golf are required. Golf course facilities are privately owned and operated. Details available upon request. Prices and features are subject to change without notice. Builder reserves the right to substitute products of equal or greater value. Due to normal construction tolerances, square footage may vary from those shown on floor plans. Floor plan illustrations are artist's conceptions and are not intended to show specific detailing. Window sizes and shapes are subject to change with elevation selected. Landscaping depicted is artist's concept and may vary as to number and maturity. #CBCA 17970