



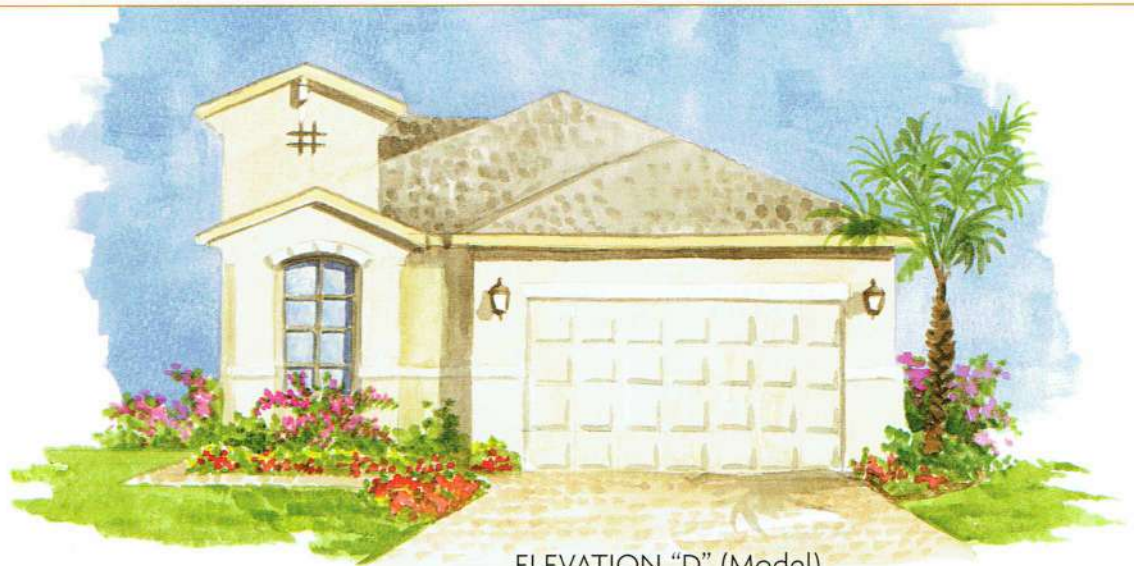
ELEVATION "A"



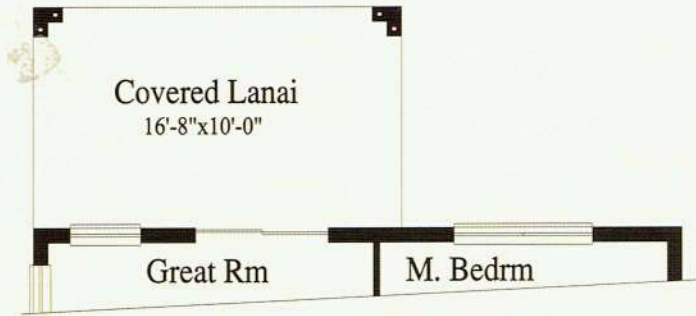
ELEVATION "B"



ELEVATION "C"



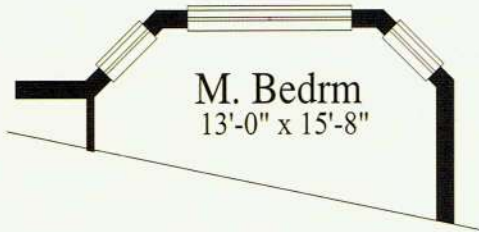
ELEVATION "D" (Model)



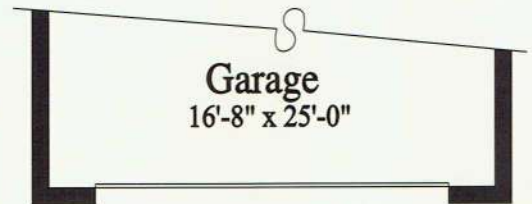
Optional 16'-8" x 10'-0"
 Covered Lanai
 not available w/ bay window option



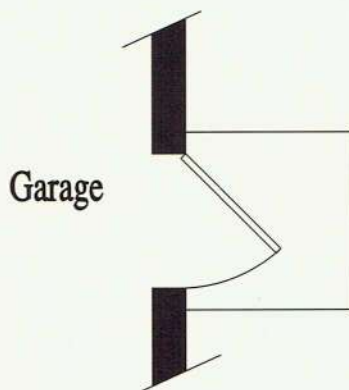
Optional 29'-4" x 10'-0" Covered Lanai



Opt. Bay Window
 @ Master Bedroom
 Not Available w/ 16'-8" x 10'-0" Lanai Option

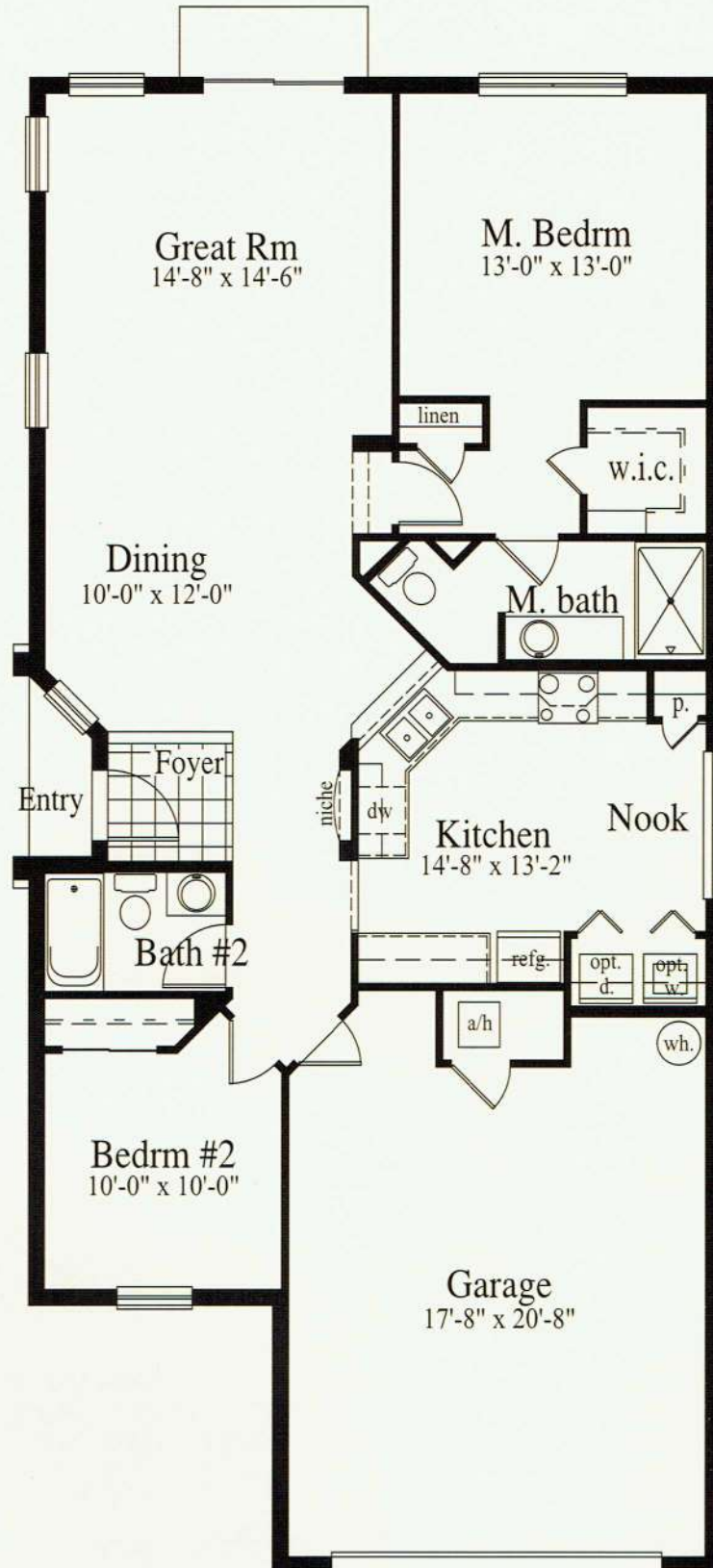


Optional 4' Extension at Garage



Optional Garage
 Service Door

Living Area	1,278 square feet
Covered Entry.....	17 square feet
Garage.....	446 square feet
<hr/>	
Total.....	1,741 square feet



1,278 Square Feet of Living Area

- 2 Bedrooms
- 2 Bath
- Oversized 1 Car Garage

DISTINCTIVE FEATURES

DISTINCTIVE EXTERIOR FEATURES:

- Choice of four exterior elevation styles
- 30 year dimensional asphalt shingle roof (10 year fungus resistant guarantee)
- Choice of decorator selected exterior color packages
- Kwikset antique nickel door handle and deadbolt lock set
- Brick paver driveway and matching entry walk in Mediterranean pattern
- Covered rear lanai on Hemingway model with masonry ceiling finish
- Electric garage door opener with two remotes
- One and a half-car garage
- 6" gutters and splash guard (front & rear per plan)
- Door chime with lighted push button
- 42" brick paver entry walk
- 8' six-panel textured fiberglass entry door
- 8' sliding glass door (per plan)
- (2) weatherproof outlets in predetermined locations
- (2) hose bibs in predetermined locations
- Decorative coach lights at garage and entry (per elevation)

QUALITY CONSTRUCTION:

- Engineered to meet Environments For Living – Silver Package
- Concrete block construction
- Textured masonry coating with 100% acrylic finish
- Bronze aluminum windows with easy care tilt-out sash
- Monolithic concrete slab with vapor barrier
- Lennox heat pump heating and cooling system with minimum 12 SEER rating
- One year termite protection
- R-30 fiberglass insulation in ceiling above air conditioned space
- R-11 fiberglass wall insulation between garage and living area
- 40 gallon water heater
- Screens for all operable windows and sliding glass doors

PREFERRED INTERIOR FEATURES:

- Elegant 9'-4" ceilings throughout (per plan)
- 12" x 12" ceramic tile flooring at foyer
- Saxony carpet and 6 lb. pad
- Latex gloss enamel paint on baseboards and door casings
- Latex satin finish interior wall paint in white
- 6'-8" six-panel Colonist interior doors
- 3 1/4" baseboards
- Knockdown texture on ceiling
- Orange peel texture finish on walls
- Decorative drywall niche (per plan)
- Rounded drywall corners (per plan)
- Kwikset interior lever door handles in polished brass
- Solid surface windowsills (straight cut)
- Large walk-in closet at master bedroom (per plan)
- Vinyl-clad closet shelving

ELECTRICAL FEATURES:

- 200 AMP electrical service
- Washer & dryer hook-ups (per plan)
- Pre-wired for (2) telephone outlets in predetermined locations
- Pre-wired for (2) television outlets in predetermined locations
- Pre-wired for ceiling fans at great room and all bedrooms
- Structured wiring panel in predetermined location

- White Decora rocker switches throughout
- Smoke detectors
- Carbon monoxide detectors in conjunction with Environments For Living

CONTEMPORARY KITCHEN FEATURES:

- Kohler/Sterling double compartment stainless steel sink
- Laminate countertops with 4" backsplash and square edge
- Moen chrome single-lever faucet with spray
- Oak cabinets with a choice of finishes
- 30" upper cabinets with fully concealed hinges
- Insinkerator 1/3 H.P. garbage disposal
- No-wax vinyl flooring in kitchen (per plan)
- Cloud-style upgraded fluorescent lighting

QUALITY WHIRLPOOL APPLIANCES FEATURING:

- 18 cu. ft. refrigerator with icemaker
- Electric coil range with self-cleaning oven
- Multi-cycle dishwasher
- Range hood vented to the outside

CLASSIC BATHROOMS:

- 42" plate glass mirrors (per plan)
- Fiberglass shower at master bath featuring safety grab bar
- Fiberglass tub/shower at secondary baths
- Ceramic bath accessories
- Laminate vanity tops with square edge and drop-in bowl (per plan)
- Mirrored medicine cabinets
- Moen chrome single lever faucets at master and secondary baths
- No-wax vinyl flooring
- Decorative lights over vanities
- Exhaust fans in all baths
- Elongated comfort height toilets
- Kohler/Sterling plumbing fixtures throughout with Moen faucets

EXCITING OPTIONS:

- Upgraded Environments For Living – Gold package
- Structural options available (per plan)
- Comfort energy package which includes radiant barrier and/or tailored foam
- Entertainment center & additional built-ins
- Upgraded appliances
- Washers and dryers
- State-of-the-art audio, video and intercom systems
- Security and central vacuum systems
- Designer lighting packages
- Flooring and countertop materials
- Upgraded cabinetry and cabinet options
- Upgraded landscaping packages
- Shower enclosures

LANDSCAPE:

- These single-family homes include a professionally designed landscape package. Sod in front, side, and rear with irrigation. Lawn care maintenance of all neighborhoods is included in the monthly fees.

ENVIRONMENTS FOR *Living*[®]

395 Village Drive • Poinciana, Florida 34759 • (863) 427-7000 • (800) 592-6099 • www.solivita.com



All homes listed are subject to prior sale. At least one resident must be 55 years of age or better. A limited number of residents may be younger, but no one under 18 years of age may be in permanent residence. Recreation club, association, and additional golf fees are required. Square footage calculations are from the outside of exterior walls and include interior partition walls. Floor plans are artist's conceptions and are not intended to show specific detailing. The developer may change home design, material, features, methods of construction and price without prior notice. Golf facilities are privately owned and operated. Details are available upon request. #CBCA17970. Not valid where prohibited. This is not intended to be and does not constitute an offer by Avatar directed to the residents of New York, New Jersey, Ohio, or any state jurisdiction, where prohibited by law, except for Solivita West, which may be offered to New Jersey residents. Solivita West is registered with the New Jersey Real Estate Commission. The complete terms of the offering are contained in a New Jersey Offering Statement available from the Sponsor. Registration does not constitute endorsement of the merits or the value of the project.